

MANAGEMENT PLAN

Overview. One goal of the PRRS CAP Management Plan is to maintain the flexibility to change as the CAP and allied stakeholder groups meet new challenges and opportunities. As envisioned in the original proposal, the management structure has continued to undergo significant modifications and improvements. The overall management philosophy is to maintain a balance between stakeholder-supported activities, including the coordination of research, extension and education. The current management scheme for the project is outlined below. Only minor modifications are expected during Year Four.

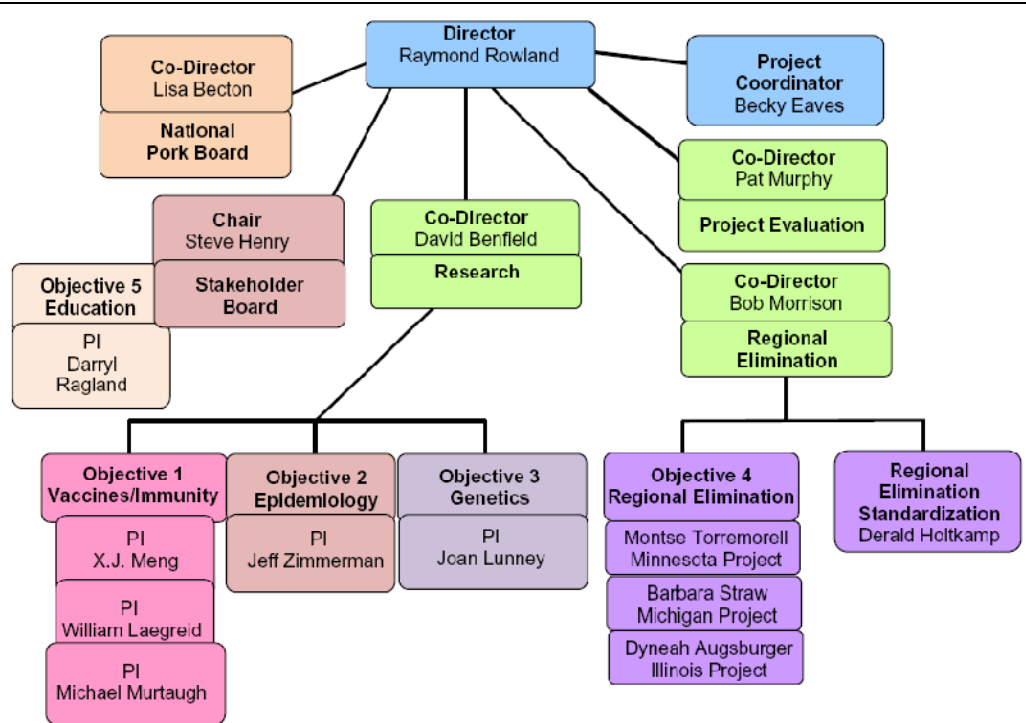


Fig. 1. PRRS CAP organizational map. The PRRS CAP is managed by a project director, Dr. Rowland, who is supported by a full-time project coordinator, Ms. Eaves. The PD coordinates the activities of the CoPDs, who oversee the management and review of CAP objectives. Dr. Becton is the National Pork Board (NPB) liaison. The stakeholder board (SB), chaired by Dr. Henry, plays active roles in setting short and long-term goals, and approves funding for PRRS CAP projects.

Stakeholder Board (SB). The PRRS CAP SB plays an active role in CAP management. This is distinct from the classic stakeholder review board that typically reviews progress and provides advice. The PRRS CAP places the SB in the “driver seat” along with the PD and other participants. As examples, the SB provides; 1) direct input into the development of short and long-term project goals, 2) participates in proposal review, selection and assessment of progress, 3) determines and approves the level of funding for each activity, and 4) identifies and recruits additional funding from the stakeholder community. The SB is chaired by Steve Henry, who is considered one of the most experienced and knowledgeable swine veterinarians in the U.S. and possesses extensive practical knowledge in the control and elimination of PRRS. His leadership

skills are widely recognized within the swine industry and academic communities. Representation is also found in the National Pork Board (NPB; Paul Sundberg), American Association of Swine Veterinarians (AASV; Daryl Olsen), USDA-APHIS (John Korsland), and United States Animal Health Association (USAHA; Harry Snelson). The SB also has an international component, through the participation of Artur Summerfield, Institute of Virology, Switzerland and Hans Nauwynck, Ghent University, Belgium, who is the director of the EU consortium known as “PoRRSCon”. Other members of the SB include practicing veterinarians, producers and representatives of private companies.

Board decisions, including addition and subtraction of members, are made by majority vote of SB members. The process of adding members to the SB is initiated as needed. A smaller Executive Committee provides core leadership within the SB. The Executive Committee is responsible for making the final approval of proposals for funding, preparing progress reports and the periodic evaluation of the project. Dr. Henry heads the SB Executive Committee, which is composed of three members approved by the SB and includes Jay Calvert (virologist and associate research fellow at Pfizer Animal Health), Paul Sundberg (Vice President, Science and Technology, NPB) and Daryl Olsen (private practice veterinarian).

PRRS CAP Stakeholder Board 2010		
Executive Committee		
Henry, Steve, Chair	Abilene Animal Hospital	Veterinarian
Calvert, Jay	Pfizer Animal Health	Scientist
Olsen, Daryl	Audobon-Manning Veterinary Clinic	Veterinarian
Sundberg, Paul	National Pork Board	NPB Representative
Additional Members (alphabetical order)		
Balasuriya, Udeni	University of Kentucky	Scientist
Baker, Rodney	Iowa State University	Production Scientist
FitzSimmons, Mark	Iowa	Veterinarian
Harms, Perry	Murphy Brown	Production Veterinarian
Hawley, Jay	Indiana	Producer
McKean, James	Iowa State University	Extension Veterinarian
Kelly, Jason	Suidae Health & Production	Production Veterinarian
Korslund, John	APHIS USDA	USDA Scientist
Lowe, James	Carthage Veterinary Service, Ltd	Veterinarian
Nauwynck, Hans	Ghent University, Belgium	Scientist
Neumann, Eric	Massey University, New Zealand	Scientist
Ragland, Darryl	Purdue	Education
Snelson, Harry	AASV	Veterinarian
Summerfield, Artur	Institute of Virology, Switzerland	Scientist

Project Director (PD). Dr. Rowland, Department of Diagnostic Medicine and Pathobiology, College of Veterinary Medicine, Kansas State University was elected Project Director by vote of the PRRS CAP2 Steering Committee. Dr. Rowland’s role is to provide the coordination needed to ensure that projects receive funding in a timely manner and that decisions and recommendations made by the SB and committees are carried out. The PD has the full-time support of a project coordinator, Rebecca Eaves, who assists in the daily activities, such as

scheduling meetings/conference calls, replying to inquiries, maintaining the PRRS CAP website and coordinating the subcontracting and reporting. Also supporting the project is a grants manager, Lisa Duer, who is located within the College of Veterinary Medicine.

Co-Project Directors (Co-PDs). The Co-PDs assist the PD in the overall CAP management. Lisa Becton, Director of Swine Health Information and Research at the National Pork Board (NPB) coordinates CAP activities with the NPB PRRS Initiative; thus avoiding duplication of funding, while providing support for new and innovative ideas. David Benfield, Associate Director of the Ohio Agricultural Research and Development Center and administrative advisor for NC-229 oversees the research activities, such as the PRRS CAP research progress and research project renewals. Evaluation of CAP activities is directed by Pat Murphy, Assistant Director- Agriculture and Natural Resources, Kansas State University. PRRS regional elimination projects are managed by Robert Morrison, University of Minnesota.

Management of Research, Extension and Education. The PRRS CAP took the forward-looking view of funding large multi-disciplinary, multi-institutional projects that pursue expansive, high-risk and long-term approaches. Research projects are typically multi-disciplinary and multi-institutional. Projects are reviewed on a yearly basis by a panel of experts in the field, as well as members of the NPB Swine Health Committee. The panel makes a recommendation and the stakeholder board members vote on the level of funding that the research project will receive in the next year. As shown in Figure 1 above, Dr. Benfield, CoPD, oversees the research areas (Objectives 1-3). He is the head of the review panel. Robert Morrison, CoPD, manages on-farm activities including regional elimination and herd bio-security projects (Objective 4, Extension). He is also the head of the panel that makes yearly evaluations of regional elimination projects. He is assisted by Derald Holtkamp, Iowa State University, who coordinates the various projects by developing standardized definitions and protocols. Objective 5, Education, is managed by Darryl Ragland, Purdue University. A key component of Education is support for training members from underrepresented groups.

Governing Principles for CAP Participants. The unique and powerful advantages that come from coordinated research activities are not without obstacles. Thus, to maintain the focus on the swine industry's need for assistance in the elimination of PRRSV, CAP participants agree to abide to the following governing principles:

- 1) Participation in the CAP is with the recognition that reducing the economic impact and animal welfare hardships caused by PRRSV is the priority of the CAP. The commitment is to the stakeholders who support these efforts.
- 2) Recognize that funding decisions are made based on merit and the priorities set by the stakeholders.
- 3) Materials, reagents, and data generated through CAP-sponsored research, extension and outreach activities are readily shared with the PRRS community. This will be done with the understanding that the processing of material transfer agreements and confidentiality statements will be expedited with all due speed.
- 6) The career development of young investigators is a priority.